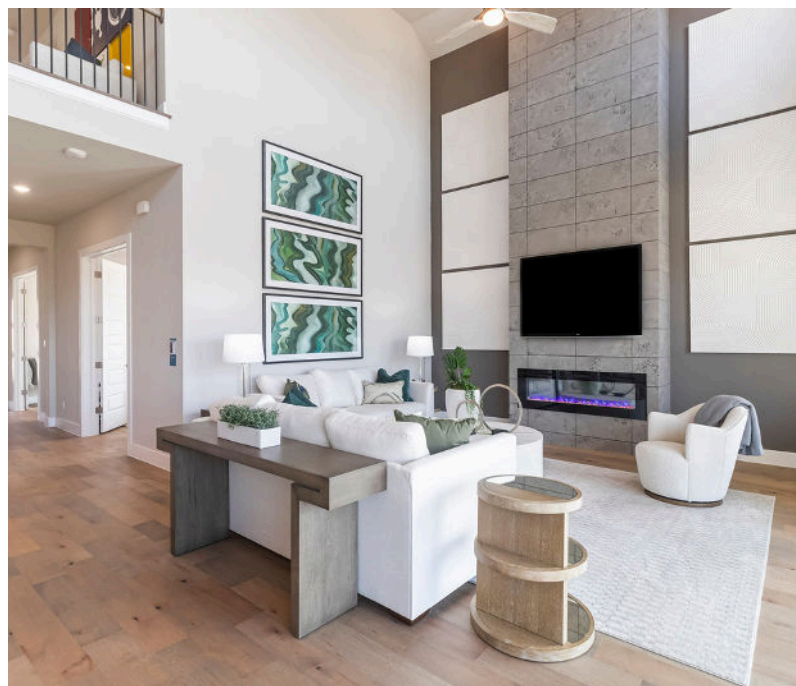


# CRESCENT BLUFF

GEORGETOWN, TX



GFOHOME



605 CRESCENT VIEW DR, GEORGETOWN, TX 78628

## UTILITY INFORMATION

Electricity	PEC Electric
888.883.3379	
Water/Sew/Trash	City of Georgetown 512-930-3640
Internet/Phone/Cable	Optimum 1-866-305-9190

## TAX INFORMATION

Wmsn ESD #8	0.09
Williamson County	0.37
Williamson CO Mud #30	0.74
Georgetown ISD	1.05
<b>TOTAL TAX RATE</b>	<b>2.291%</b>

\*For tax information, please visit [www.wcad.org](http://www.wcad.org)

## SCHOOL INFORMATION

<b>Georgetown ISD</b>	<a href="http://www.georgetownisd.org">www.georgetownisd.org</a>
Wolf Ranch Elementary	512-943-5050
Tippit Middle School	512-943-5040
East View High School	512-943-1800

## HOMEOWNERS ASSOC.

Associa Hill Country	512-347-2888
<b>HOA Dues</b>	<b>\$320 biannually</b>
<b>Initial Enrollment</b>	<b>\$200</b>

## CONTACT US

WHITNEY BURKETT

COMMUNITY SALES MANAGER

737.257.5140 | [AUSTIN@GFOHOME.COM](mailto:AUSTIN@GFOHOME.COM)



*\*Tax Rate Information, School Information & Zoning, and Homeowners Association Fees/Dues are subject to change without notice and are not guaranteed to be accurate or up to date. Buyers, realtors, and all parties should check with the associated school district, HOA, or taxing jurisdiction to verify accurate and correct information before making a decision to purchase. School attendance zones and boundaries are provided by a third party and subject to change. Please contact the associated school district, HOA, and/or appraisal district for correct and accurate information.*